

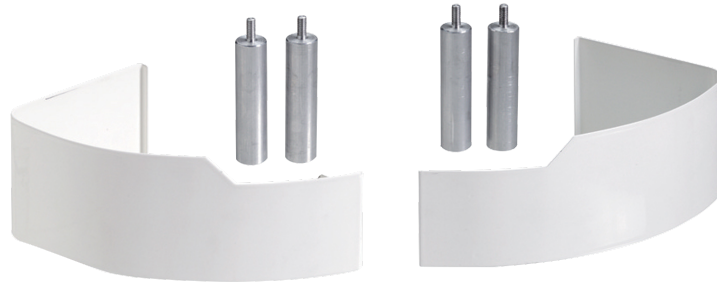
Product Data Sheet

4/25/2026

Convectors & Fan Coils

Cover feet for iVector

Romania - Purmo



- Suitable for iVector S2
- Conceals supply pipes
- Not for ground anchoring
- Optional floor mounting
- Aesthetic enhancement

Description

Pipe Covers/Feet conceal supply and return pipes as they enter the unit, enhancing the system's aesthetics and ensuring a neat appearance. These covers should be installed on wall-mounted appliances and are not suitable for anchoring the iVector S2 to the ground. Optional floor mounting feet are available for ground anchoring needs.

Area of Application

Pipe Covers/Feet are ideal for covering supply and return pipes entering into wall-mounted units. They are specifically designed for appliances anchored to the back wall and should not be used for ground anchoring of the iVector S2. Optional floor mounting feet are available for instances requiring ground anchoring.

Selection Criteria

For selecting the appropriate Pipe Covers/Feet, refer to our design service or use our brochure for quick selection.

Basic User Instructions

To use Pipe Covers/Feet, install them on appliances anchored to the back wall to conceal the supply and return pipes. Ensure these covers are not used to anchor the iVector S2 to the ground. For floor anchoring requirements, utilize the optional floor mounting feet accessories.

Prescription text specifiers

Pipe Covers/Feet are designed to conceal the supply and return pipes entering the unit. They should be used with appliances anchored to the back wall and should not be utilized for anchoring the iVector S2 to the ground. These covers provide a neat and aesthetic finish to the installation, ensuring the supply and return pipes are concealed effectively. For installations requiring ground anchoring, optional floor mounting feet are available. Ensure to follow the proper installation procedures to maintain system integrity and appearance.

Warranty

Warranty 2 years

Specification

Feature	Unit	Value
---------	------	-------

Resources

Document Description	Document Type	Link
Installation guide	Installation Instructions	https://asset.productmarketingcloud.com/api/assetstorage/3577_25d47cfc-b82d-4d25-b3bf-45786bda0dc8

Items

Global Item Code	Item Description
------------------	------------------