

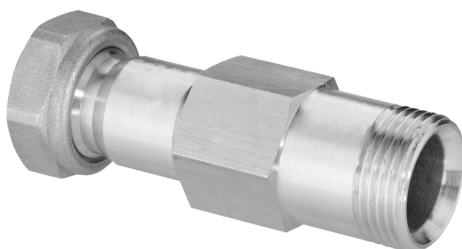
Product Data Sheet

4/25/2026

Convectors & Fan Coils

iVector S2/Vido S2 Valve connection extension

Romania - Purmo



- Suitable for iVector S2
- For use when connected through the floor
- Ease of installation
- Improves system efficiency
- Reliable performance

Description

The 81mm iVector S2 Valve Extension is designed for use with return valves in scenarios where the iVector S2 radiator pipes are connected from the floor. This spacer ensures compatibility and ease of installation, providing a robust and reliable connection. It supports the efficient operation of heating systems by maintaining secure and insulated pipe connections.

Area of Application

The iVector S2 Valve Extension is suitable for use with return valves when the pipe connection of the iVector S2 is from the floor. It is tailored for central heating systems in residential or commercial buildings, ensuring secure and efficient floor-based pipe connections to improve overall heating system efficiency.

Selection Criteria

For optimal selection, refer to use our design service. For quick selection, use our brochure.

Basic User Instructions

To install the iVector S2 Valve Extension, ensure it is used with return valves when connecting the iVector S2 radiator pipes from the floor. Insulation pieces should be fitted to the flow and return valves after connecting the pipework. Ensure all connections are sealed and secured according to installation guidelines to prevent any leakages.

Prescription text specifiers

The iVector S2 Valve Extension is a 81mm spacer designed for secure use with return valves when the iVector S2 pipe connection is from the floor. It provides robust insulation and secure attachment, ensuring reliable operation and minimizing the risk of leaks. Ideal for residential and commercial central heating systems, this extension is essential for installations requiring floor-based pipe connections.

Warranty

Warranty 2 years

Specification

Feature	Unit	Value
---------	------	-------

Resources

Document Description	Document Type	Link
Installation guide	Installation Instructions	https://asset.productmarketingcloud.com/api/assetstorage/3577_25d47cfc-b82d-4d25-b3bf-45786bda0dc8

Items

Global Item Code	Item Description
------------------	------------------