

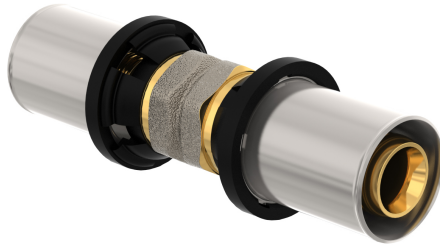
Product Data Sheet

5/24/2025

Seals & Fittings

CLEVERFIT Radial Coupling

Romania - Purmo



- Enhanced Durability
- Leak-Before-Press
- User-friendly Installation
- Versatile Application
- Certified Safety

Description

CLEVERFIT Radial Coupling features a robust PPSU body, ensuring durability under high stress and temperatures. With deep-seated O-rings and a special viewing window, it simplifies installation while guaranteeing a reliable seal. The “Leak Before Press” functionality helps detect unpressed connections early, preventing costly future repairs. Suitable for various applications, it meets rigorous certifications for drinking water safety.

Area of Application

CLEVERFIT Radial Coupling is suitable for heating and water supply systems. It’s ideal for both cold and hot water installations, with a temperature range up to 90°C and project pressure up to 10 bar. Certified for drinking water systems in compliance with DIN EN 21003, DVGW and local standards.

Selection Criteria

Select based on system specifications for pressure and temperature. Use our design service or brochure for quick selection.

Basic User Instructions

To install CLEVERFIT Radial Coupling, ensure the pipe is cut square, calibrated, and the edges are deburred. Insert the pipe fully into the coupling until it reaches the inspection window. Use appropriate jaw profiles to press the connection securely. Verify the connection by checking for any leaks.

Prescription text specifiers

The CLEVERFIT Radial Coupling is made from robust PPSU, resistant to high stress, temperatures up to 90°C, and pressures up to 10 bar. It features deep-seated O-rings, ensuring secure and durable connections, a special viewing window for installation verification, and the Leak-Before-Press function to detect unpressed fittings. This coupling is suitable for both heating and potable water systems, compliant with DVGW and PZH certifications for drinking water applications. Use the Multitool function to apply TH and U profiles for pressing connections. Available in diameters from 16mm to 32mm.

Warranty

Specification

Feature	Unit	Value
Etim Class		EC003024 - Fitting with 2 connections
Depth	Millimetre (mm)	22, 23.3, 23.4, 25, 27, 27.3, 27.4, 33.3, 33.4, 33.9, 34, 39, 39.3, 40.7, 43.5
Weight	Kilogram (kg)	0.0204, 0.0207, 0.0267, 0.0274, 0.036 ... 0.1521, 0.1693, 0.176, 0.1818, 0.1873
Height	Millimetre (mm)	22, 23.3, 23.4, 25, 27, 27.3, 27.4, 33.3, 33.4, 33.9, 34, 39, 39.3, 40.7, 43.5
Model		1-part, 2-part
Shape		Straight
Connection 1		Press sleeve
Connection 2		Internal thread metric, Press sleeve
Length	Millimetre (mm)	49.5, 50.4, 50.8, 52, 54.5 ... 73, 75.5, 76.5, 80, 81
Surface protection connection 1		Nickel-plated, Untreated
Surface treatment connection 1		Pickled, Untreated
Surface protection connection 2		Galvanic/electrolytic zinc plated, Nickel-plated, Untreated
Surface treatment connection 2		Pickled, Untreated
Contour code connection 1		Several, TH, TH/U
Contour code connection 2		Other, Several, TH/U
Max. operating pressure at max. medium temperature	Bar (bar)	10
Main colour fitting		Other
With connection indicator		Yes
Zeta value		0.75, 0.8, 1.19, 1.41, 1.5, 1.8, 2.1, 2.4, 4.9, 5.4, 5.8
Capped		No
With sealing rings/gaskets		Yes
Nominal diameter connection 2		1 inch (25), 1/2 inch (15), 3/4 inch (20), DN 12, DN 15, DN 20, DN 25, Other
Eccentric		No
With drain valve		No
With de-aerator		No
Outer pipe diameter connection 1	Millimetre (mm)	14, 16, 20, 26, 32
Outer pipe diameter connection 2	Millimetre (mm)	14, 15, 16, 18, 20, 22, 25, 26, 28, 32
With buffer stud		No
Wall thickness, connection 1	Millimetre (mm)	2, 3, 3.5
Material sealing		Ethylene-propylene diene monomer

Feature	Unit	Value
Material sealing		rubber (EPDM)
Reducing		No, Yes
Max. operating pressure at 20 °C	Bar (bar)	10
Medium temperature (continuous)	Degrees celsius (°C)	70, 95
Nominal diameter connection 1		DN 10, DN 12, DN 15, DN 20, DN 25
With thermal insulation		No
High tensile strength		Yes
System specific		Yes
Material connection 1		Brass, Polyphenylsulfone (PPSU)
Material connection 2		Brass, Copper, Polyphenylsulfone (PPSU)
Material quality connection 1		CuZn39Pb3 (CW617N), Other
Material quality connection 2		CuZn39Pb3 (CW617N), CuZn40Pb2 (CW617N), Other

Resources

Document Description	Document Type	Link
----------------------	---------------	------

Items

Global Item Code	Item Description
FAZ4A12F16A000E0	Coupling CFpress F 16x1/2"
FAZ4A12F20A000E0	Coupling CFpress F 20x1/2"
FAZ4A34F20A000E0	Coupling CFpress F 20x3/4"
FAZ4A34F26A000E0	Coupling CFpress F 26x3/4"
FAZ4A44F26A000E0	Coupling CFpress F 26x1"
FAZ4A44F32A000E0	Coupling CFpress F 32x1"
FAZ4C12M16A000E0	Coupling CFpress M 16x1/2"
FAZ4C12M20A000E0	Coupling CFpress M 20x1/2"
FAZ4C14A14A000P0	Fitting Pipe-Pipe Sitec 14x14
FAZ4C15K16A000E0	Radial Coupling copper 16x15
FAZ4C16A16A000E0	Coupling CFpress 16x16
FAZ4C18K20A000E0	Radial Coupling copper 20x18
FAZ4C20A16A000E0	Red coupling CFpress 20x16
FAZ4C20A20A000E0	Coupling CFpress 20x20
FAZ4C22K20A000E0	Radial Coupling copper 20x22
FAZ4C22K26A000E0	Radial Coupling copper 26x22
FAZ4C26A16A000E0	Red coupling CFpress 26x16
FAZ4C26A20A000E0	Red coupling CFpress 26x20
FAZ4C26A26A000E0	Coupling CFpress 26x26
FAZ4C28K32A000E0	Radial Coupling copper 32x28
FAZ4C32A20A000E0	Red coupling CFpress 32x20
FAZ4C32A26A000E0	Red coupling CFpress 32x26
FAZ4C32A32A000E0	Coupling CFpress 32x32
FAZ4C34F16A000E0	ScrCon CFpress F flat 16x3/4"
FAZ4C34F20A000E0	ScrCon CFpress F 20x3/4"
FAZ4C34M20A000E0	Coupling CFpress M 20x3/4"
FAZ4C34M26A000E0	Coupling CFpress M 26x3/4"
FAZ4C44F26A000E0	ScrCon CFpress F flat 26x1"
FAZ4C44M26A000E0	Coupling CFpress M 26x1"
FAZ4C44M32A000E0	Coupling CFpress M 32x1"
FAZ8A16A20A000E0	RedCoupling PPSU CFpress 16x20
FAZ8A32A26A000E0	RedCoupling PPSU CFpress 32x26
FAZ8C12M16A000E0	Coupling PPSU CFpress M16x1/2"
FAZ8C16A16A000E0	Coupling PPSU CFpress 16x16
FAZ8C20A20A000E0	Coupling PPSU CFpress 20x20

Global Item Code	Item Description
FAZ8C26A16A000E0	RedCoupling PPSU CFpress 26x16
FAZ8C26A20A000E0	RedCoupling PPSU CFpress 26x20
FAZ8C26A26A000E0	Coupling PPSU CFpress 26x26
FAZ8C32A32A000E0	Coupling PPSU CFpress 32x32