

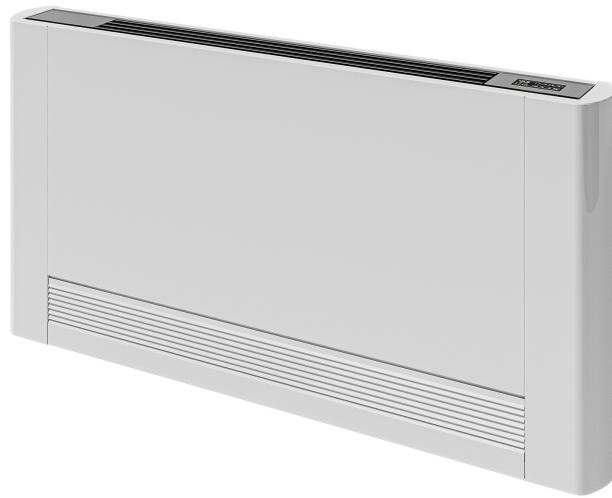
Product Data Sheet

5/18/2026

Convectors & Fan Coils

Vido S2

Romania - Purmo



- Modern, compact design
- Intelligent heating & cooling functions
- Low temperature compatibility
- Quick temperature response
- Flexible installation options

Description

The iVector S2 is a whisper-quiet fan convector with an attractive, compact design. It offers both heating and cooling functions with higher heat output at lower system temperatures compared to competitive products. With low water content, the iVector S2 quickly responds to room temperature fluctuations. It's compact in size and offers installation options like wall or ceiling mounting and wall or ceiling recessing, as well as floor standing, providing flexible interior design options and energy-efficient benefits.

Area of Application

The iVector S2 unit is suitable for on-wall/ceiling and in-wall/ceiling heating and cooling solutions. It features low sound levels and a high-capacity fan, making it ideal for quickly climatizing rooms using less energy. It includes options for remote control and 0-10V control via PCB board. This appliance **MUST NOT** be installed in a bathroom or other similar high humidity areas.

Selection Criteria

For selecting the correct size, please use our online selector at www.purmo.se/tools/fanconvectors or use our brochure for a quick selection.

Basic User Instructions

For easy setup, use the display on the unit or the remote control. To remove the hatch for the filter, gently pull up the hatch, remove the filter, and clean it with warm water. The unit provides room temperature regulation with an integrated or wall-mounted remote control. It offers automated fan speed adjustments based on the detected temperature, and various programmable modes like Auto, Silent, Night, and Maximum speed settings.

Prescription text specifiers

The iVector S2 is available with casing (VS model) or without casing (VSI model), in 5 different lengths. VS models can be mounted vertically on the wall or horizontally on the ceiling, with options for integral controls or remote controls. All units are available in 2 or 4-pipe options and come with pre-fitted valves. VSI models can be recessed vertically or horizontally with wall-mounted remote control options. This unit is ideal for on-wall, in-wall, and ceiling installations, providing heating and cooling with quick operational response thanks to its low water content and high-capacity fan. It's compatible with BMS via 0-10V control.

Warranty

Warranty 2 years

Specification

Feature	Unit	Value
Etim Class		EC011034 - Fan coil unit
Weight	Kilogram (kg)	12, 26, 32
Mounting method		Wall built-in, Wall surface mounted
Colour		White
Width	Millimetre (mm)	1125, 1135, 1325, 1335, 1535, 525, 725, 735, 925, 935
Height	Millimetre (mm)	570, 576, 580, 595, 636, 639, 640
Depth	Millimetre (mm)	126, 131
RAL-number		9003
Length	Millimetre (mm)	1125, 1135, 1325, 1335, 1535, 525, 725, 735, 925, 935
Connection voltage	Volt (V)	230
Frequency		50 Hz
Built-in depth	Millimetre (mm)	126
With filter		Yes
Cooling capacity 25 °C - 7/12 perceived high	Watt (W)	0.46, 0.74, 0.93, 1.59, 1.69, 2.01, 2.23, 2.29, 2.6, 2.94
Cooling capacity 25 °C - 7/12 perceived medium	Watt (W)	0.36, 0.59, 0.71, 0.99, 1.33, 1.64, 1.67, 1.82, 1.86, 2.01
Cooling capacity 25 °C - 7/12 perceived low	Watt (W)	0.23, 0.34, 0.52, 0.57, 0.9, 0.95, 1, 1.11, 1.12, 1.4
Heat emission 20 °C - 75/65 high	Watt (W)	0.71, 1.44, 2.04, 2.21, 2.9, 3.28, 4.71, 6.62, 8.42, 9.54
Heat emission 20 °C - 75/65 medium	Watt (W)	0.62, 1.24, 1.51, 1.74, 2.54, 2.73, 3.28, 4.79, 5.81, 6.33
Heat emission 20 °C - 75/65 low	Watt (W)	0.38, 0.81, 1.28, 1.76, 1.85, 1.87, 2.68, 3.29, 3.34
Cooling capacity according to EN 16430 26 °C - 17/19 perceived high	Watt (W)	0.24, 0.37, 0.49, 0.73, 0.84, 0.95, 1, 1.1, 1.23, 1.36
Cooling capacity according to EN 16430 26 °C - 17/19 perceived medium	Watt (W)	0.18, 0.26, 0.41, 0.54, 0.61, 0.73, 0.78, 0.85, 0.9, 0.94
Cooling capacity according to EN 16430 26 °C - 17/19 perceived low	Watt (W)	0.11, 0.15, 0.27, 0.4, 0.45, 0.49, 0.57, 0.62, 0.66
With drain valve		Yes
With de-aerator		Yes
With grid		Yes
With legs		No
Material grid		Stainless steel

Feature	Unit	Value
Nominal diameter heating		3/4 inch (20)
Nominal diameter cooling		3/4 inch (20)
With fresh air connection		No
Water connections, left		Yes
With level switch		Yes
Front exhaust		No
Surface protection grid		Lacquered, Other
Grid colour		White
Suitable for heating		Yes
Suitable for cooling		Yes
With separate batteries		No, Yes
Heat emission 20 °C - 90/70 high	Watt (W)	0.66, 1.61, 10.11, 11.46, 2.2, 2.64, 3.26, 3.75, 5.62, 7.96
Heat emission 20 °C - 90/70 medium	Watt (W)	0.63, 1.39, 1.87, 1.92, 2.85, 3.13, 3.94, 5.78, 7, 7.63
Heat emission 20 °C - 90/70 low	Watt (W)	0.44, 0.93, 1.03, 1.14, 1.71, 1.97, 2.23, 3.26, 3.99, 5.27
Cooling capacity 25 °C - 6/12 perceived high	Watt (W)	0.46, 0.71, 0.83, 1.56, 1.62, 2.03, 2.27, 2.32, 2.65, 2.95
Cooling capacity 25 °C - 6/12 perceived medium	Watt (W)	0.37, 0.63, 0.74, 1.04, 1.35, 1.62, 1.64, 1.72, 1.87, 1.92
Cooling capacity 25 °C - 6/12 perceived low	Watt (W)	0.25, 0.39, 0.55, 0.63, 0.87, 0.92, 0.94, 1.05, 1.16, 1.29
Air volume high	Cubic metre per hour (m ³ /h)	132, 146, 260, 294, 370, 438, 476, 542, 567, 663
Air volume medium	Cubic metre per hour (m ³ /h)	207, 210, 267, 291, 318, 410, 416, 479, 91
Air volume low	Cubic metre per hour (m ³ /h)	124, 194, 247, 262, 302, 364, 46, 49
Sound pressure level high	Decibel A weighted (dB(A))	51, 53, 54, 55, 57
Sound pressure level medium	Decibel A weighted (dB(A))	44, 45, 46, 47, 48
Sound pressure level low	Decibel A weighted (dB(A))	33, 35, 36, 37
With electric heating element		No
With drip-tray		No, Yes
With built-in position controller		No, Yes
Built-in depth adjustable		No
RAL-number grid		9003
Standard colour		Yes
Degree of gloss		Glossy
Item weight	Kilogram (kg)	10, 12, 17, 20, 21, 23, 24, 25, 26, 32, 9

Resources

Document Description	Document Type	Link
Technical guide	Product Catalog	https://asset.productmarketingcloud.com/api/assetstorage/3577_aca91c16-f41d-4d0d-b547-cd823d511615
Installation guide	Installation Instructions	https://asset.productmarketingcloud.com/api/assetstorage/3577_25d47cfc-b82d-4d25-b3bf-45786bda0dc8
Performance tabel	Technical Brochure	https://asset.productmarketingcloud.com/api/assetstorage/3577_1e23d4fe-2cb2-4288-999a-157da7b812e9

Items

Global Item Code	Item Description
FHJA0580742A3510	
FHJA0580742A3530	
FHJA0580742A3540	
FHJA0580742A3550	
FHJA0580942A3510	
FHJA0580942A3530	
FHJA0580942A3540	
FHJA0580942A3550	
FHJA0581142A3510	
FHJA0581142A3530	
FHJA0581142A3540	
FHJA0581142A3550	
FHJA0581342A3510	
FHJA0581342A3530	
FHJA0581342A3540	
FHJA0581342A3550	
FHJA0581542A3510	
FHJA0581542A3530	
FHJA0581542A3540	
FHJA0581542A3550	
FHJA0640744A3510	
FHJA0640744A3530	
FHJA0640744A3540	
FHJA0640744A3550	
FHJA0640944A3510	
FHJA0640944A3530	
FHJA0640944A3540	

Global Item Code	Item Description
FHJA0640944A3550	
FHJA0641144A3510	
FHJA0641144A3530	
FHJA0641144A3540	
FHJA0641144A3550	
FHJA0641344A3510	
FHJA0641344A3530	
FHJA0641344A3540	
FHJA0641344A3550	
FHJA0641544A3510	
FHJA0641544A3530	
FHJA0641544A3540	
FHJA0641544A3550	
FHJB0580742A3530	
FHJB0580742A3540	
FHJB0580742A3550	
FHJB0580942A3530	
FHJB0580942A3540	
FHJB0580942A3550	
FHJB0581142A3530	
FHJB0581142A3540	
FHJB0581142A3550	
FHJB0581342A3530	
FHJB0581342A3540	
FHJB0581342A3550	
FHJB0581542A3530	
FHJB0581542A3540	
FHJB0581542A3550	
FHJB0640744A3530	
FHJB0640744A3540	
FHJB0640744A3550	
FHJB0640944A3530	
FHJB0640944A3540	
FHJB0640944A3550	
FHJB0641144A3530	
FHJB0641144A3540	
FHJB0641144A3550	
FHJB0641344A3530	
FHJB0641344A3540	
FHJB0641344A3550	
FHJB0641544A3530	

Global Item Code	Item Description
FHJB0641544A3540	
FHJB0641544A3550	